

## Product data sheet H300

With a Hydraloop device, you can recycle up to 95% of shower & bath graywater and optionally 50% of washing machine graywater – which enables you to reuse 25-45% of the total in-house domestic water. Through innovative and breakthrough technology, Hydraloop recycled water is clean, clear, safe and certified and can be reused for toilet flushing, washing machine, garden irrigation and/or swimming pool top-up.

Hydraloop H300 has been tested and certified to NSF/ANSI 350 and IAPMO R&T.

## Hydraloop H300

<b>H300 (Standard inlet)</b>	<b>Input:</b> Graywater from shower and bath <b>Output:</b> Three (3) valves for reusable water to the toilets, washing machine and auxiliary* use. <b>Colour:</b> Ivory <b>Front plate:</b> Galvanised steel front plate with top status light <b>Front plate design cover**:</b> Magnetic design cover with various prints
<b>H300 Premium</b>	<b>Input:</b> Graywater from shower and bath. Optionally washing machine <b>Output:</b> Three (3) valves for reusable water to the toilets, washing machine and auxiliary* use <b>Colour:</b> Ivory <b>Front plate:</b> Galvanised steel front plate with top status light <b>Front plate design cover**:</b> Magnetic design cover with various prints

\* Auxiliary outlet is always present, but to activate must be ordered as add-on

\*\* Design cover is an optional magnetic full color cover, available as add-on

## Output specifications

The recycled water from Hydraloop is suitable for toilet flushing, washing machine, garden irrigation, topping up swimming pool and cleaning purposes.

Output Outlet	Water Delivery	Pipe size
Toilet	permanently pressurized	1/2" BSP
Washing machine	permanently pressurized	1/2" BSP
Auxiliary *	only pressurized before transfer to T3 when T3 is full	1/2" BSP

\* Auxiliary outlet will be activated after order as add-on.

## Distribution pump performance:

- Nominal pump pressure: 2.1 bar / 210 kPa
- Nominal flow: 12 l/min



## Input specifications

Hydraloop requires a backup water connection in case there is insufficient recycled water available. Backup water can be mains (tap) water, treated rainwater or treated well water.

Input Outlet	Water Delivery	Pipe size
Backup water	permanently pressurized min. 12 l/min required	1/2" BSP

The backup water enters the Hydraloop via a safe air gap (T4), ensuring no possible connection between (recycled) grey water and backup water.

## Specifications

Hydraloop H300	
Volume	300 liters
Nominal cleaning capacity	360 liters (depending on user behavior)
Voltage	120 / 240V, 24V internal
Average power consumption	220 kWh/year, 25W during treatment
Internet	The Hydraloop device needs to be connected with internet through an ethernet cable or an internal Wi-Fi-network.  Note: Wi-Fi router must be > 1m from Hydraloop
Greywater input sources (possible)	Shower, Bath and Washing machine (with inlet diverter)



Sound Pressure (Lpa) level at various treatment stages		Interval / duration
Air pump	29 dB(A)	Daily / long
Distribution pump	29 dB(A)	Daily / with use
Greywater flow into Hydraloop	49 dB(A)	Daily / with use
Backup water filling	48 dB(A)	Weekly / depending on user behavior
Inlet diverter open/close	50 dB(A)	Depending on user behavior / when recycling greywater from washing machine
Self-cleaning cycle	50 dB(A)	Weekly / short

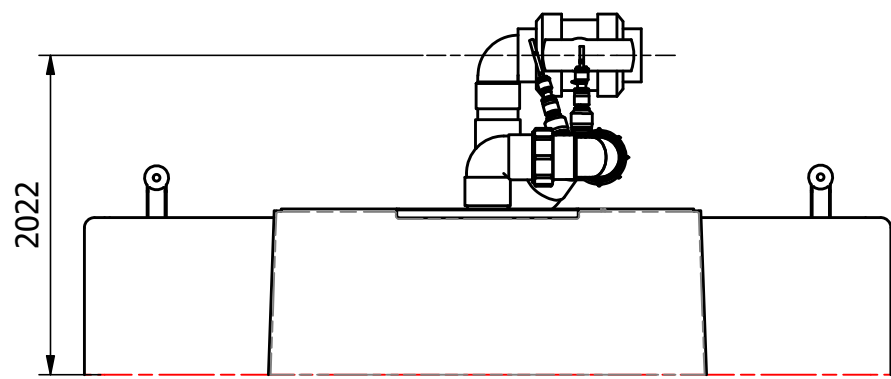
## Dimensions and weights

HYDRALOOP MODEL	WIDTH (MM)	DEPTH (MM)	HEIGHT (MM)	DRY WEIGHT (KG)	WET WEIGHT (KG)
H300 (Inlet standard)	800	360	1985	82,5	383
H300 (Inlet Diverter)	800	360	1990	83,5	384

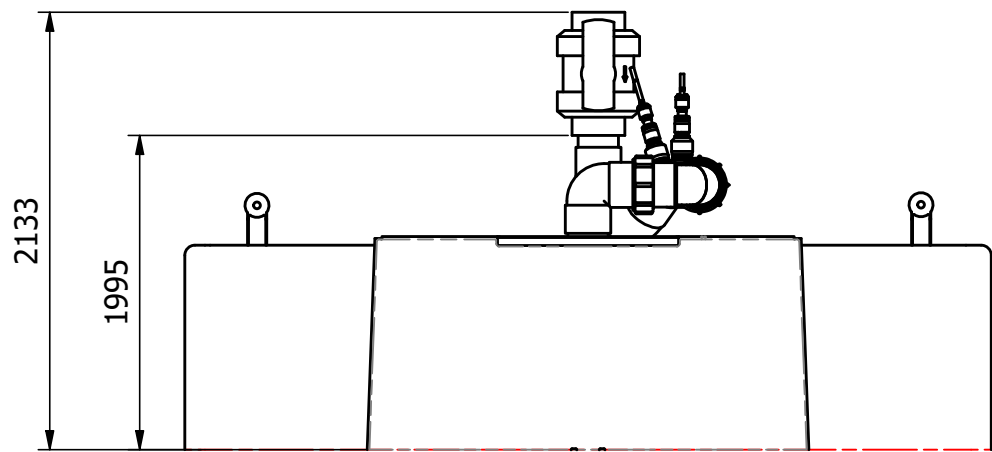
For the technical detailed drawing, see the next pages.

PVC ball valve - Position options

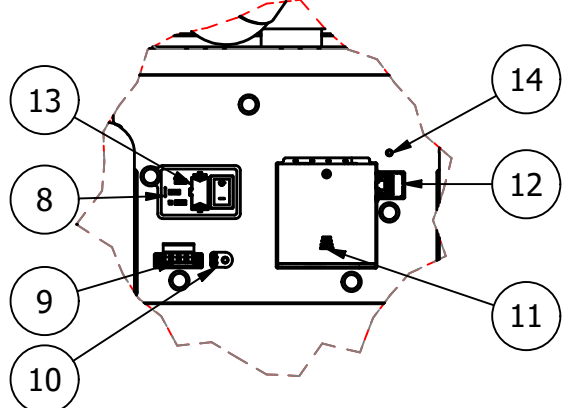
a.Horizontal option



b. Vertical option

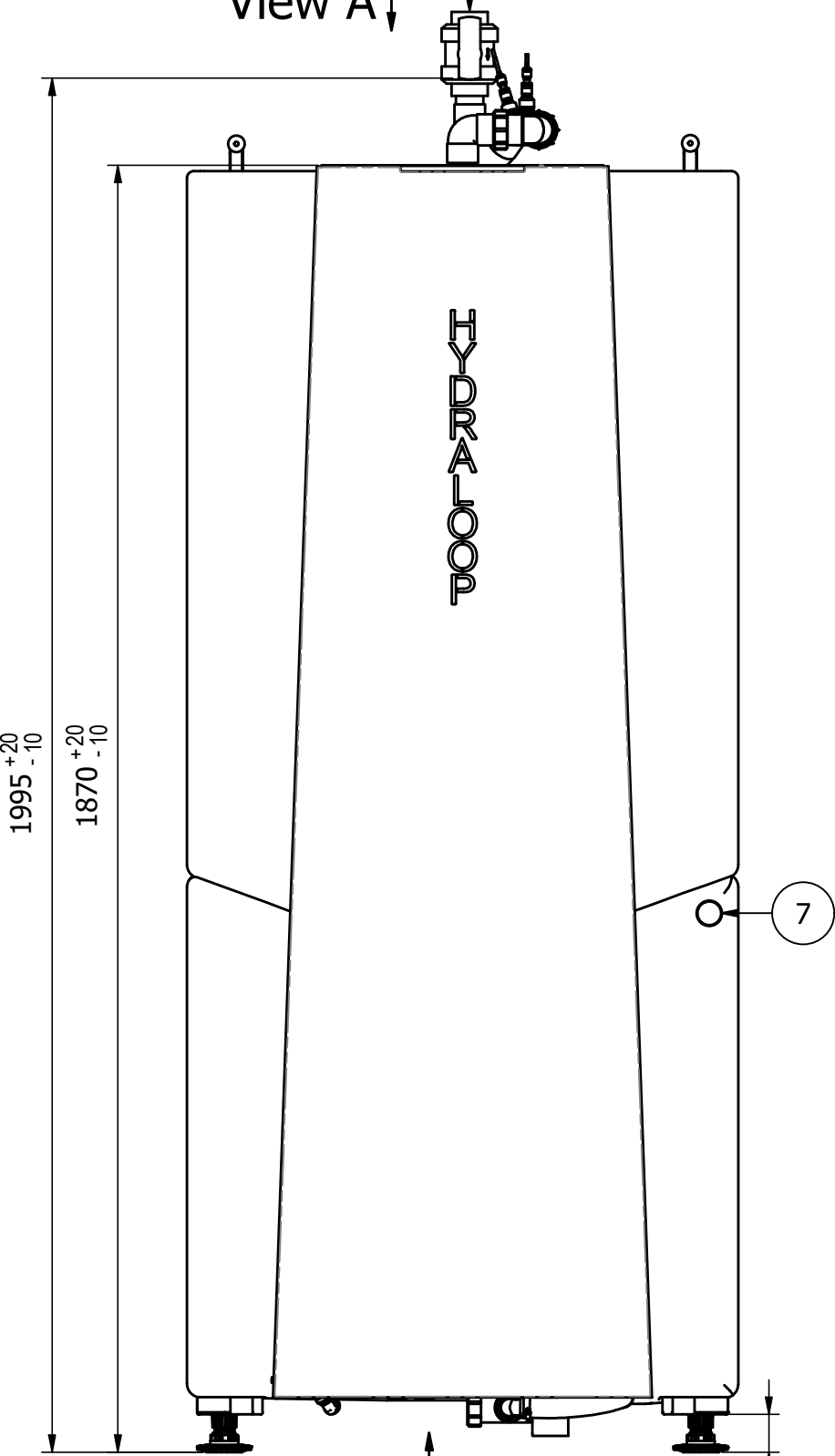


Detail C  
(Scale 1 : 5)

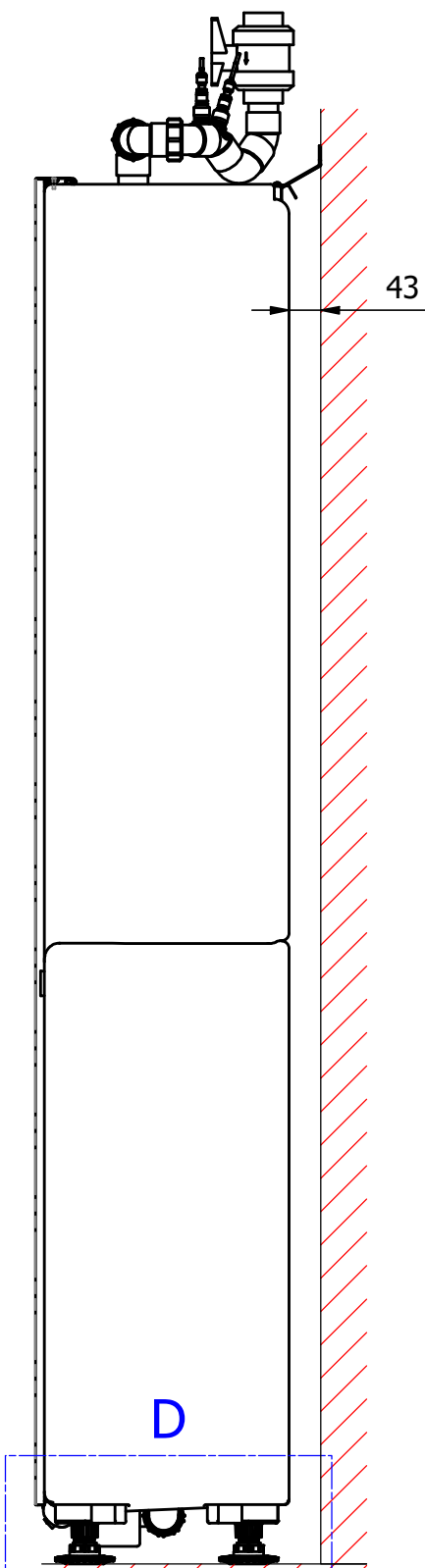
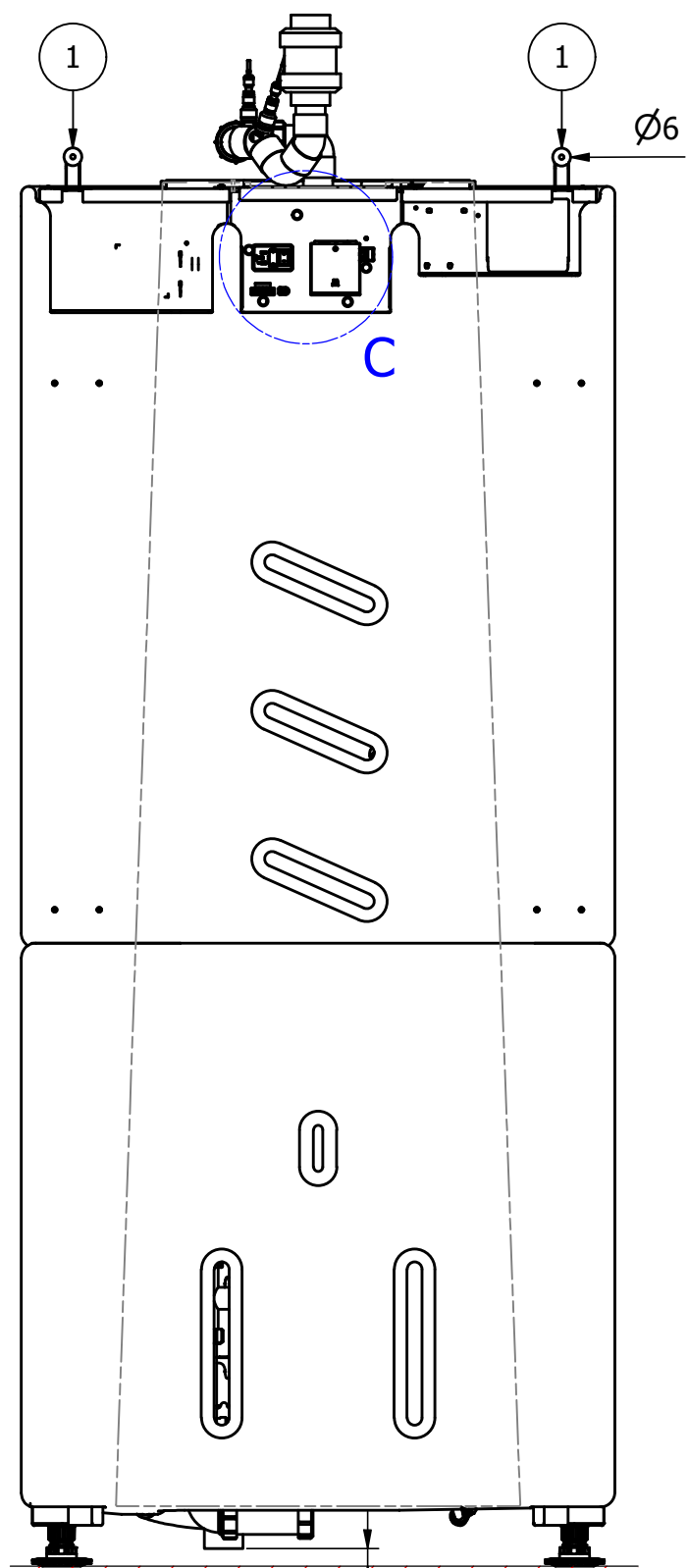


View A ↓

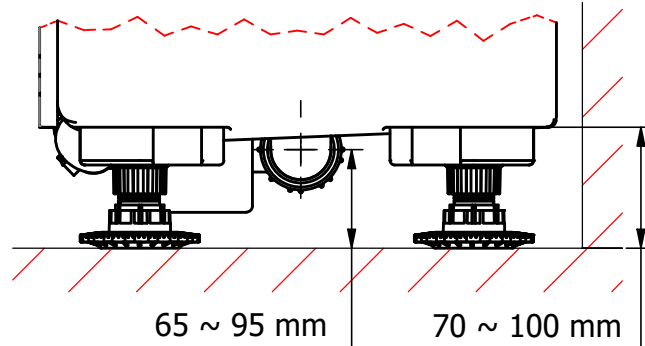
Ø40 mm ID - water inlet



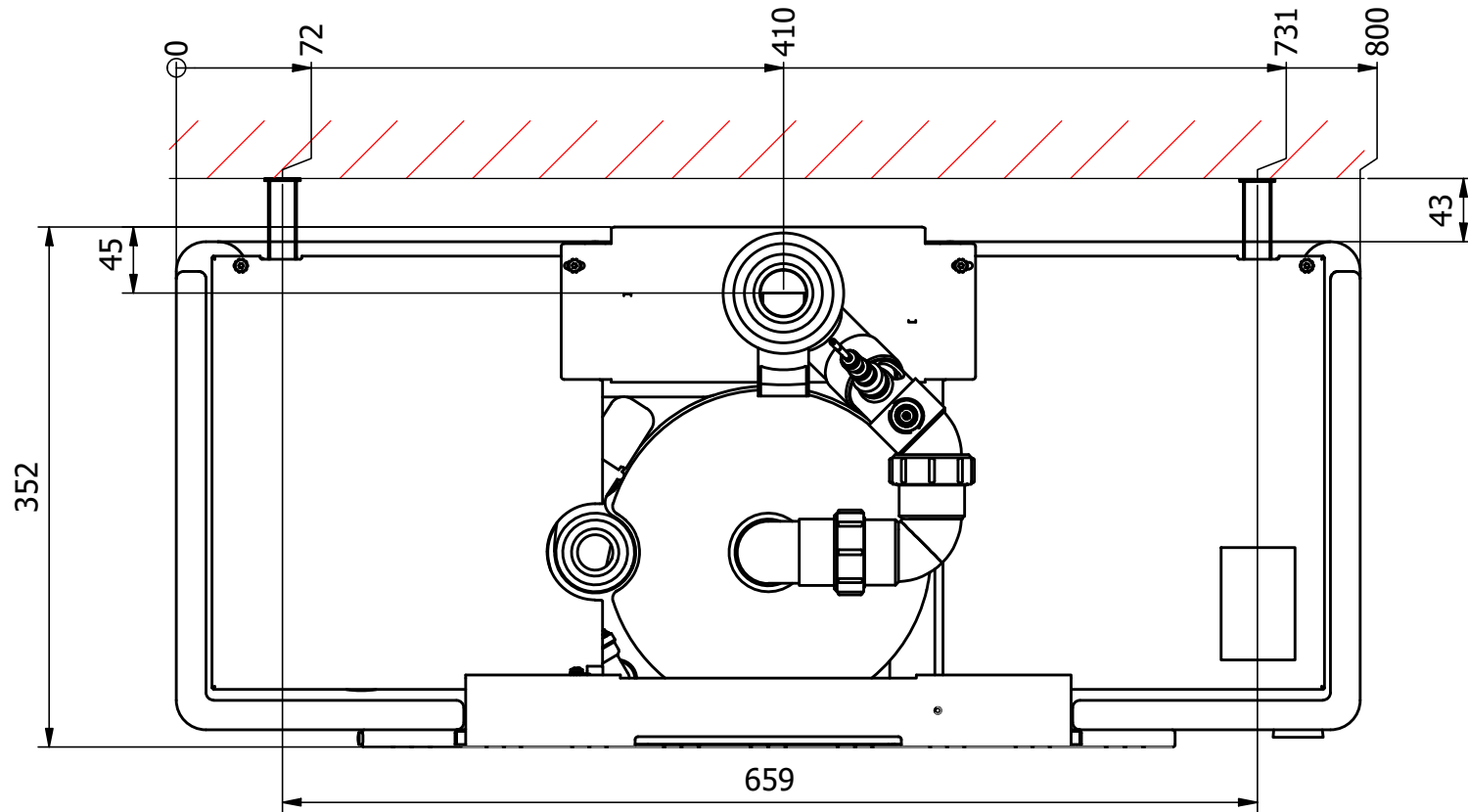
View B ↑



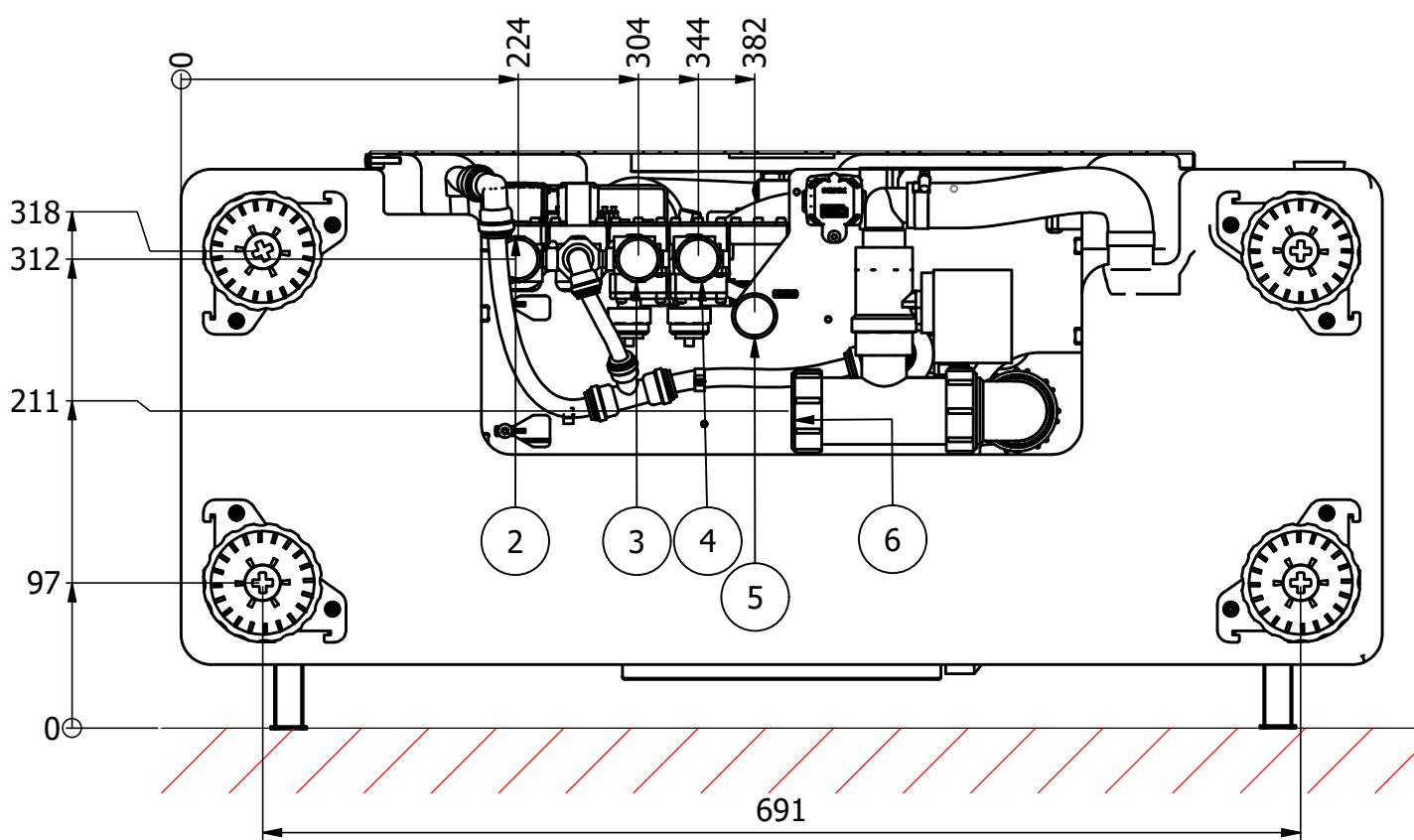
Detail D  
(Schaal 1 : 5)



View A  
( 1 : 5 )



View B  
( 1 : 5 )



TABLE

POS	DESCRIPTION
1	Wall mount
2	Feed to Garden
3	Feed to toilet cistern (WC)
4	Feed to washing machine
5	Mains water supply
6	Waste water sleeve
7	Maintenance inlet for citric acid cleaning
8	Power supply
9	RS485
10	USB-C
11	Battery
12	LAN
13	Fuse
14	OPT button

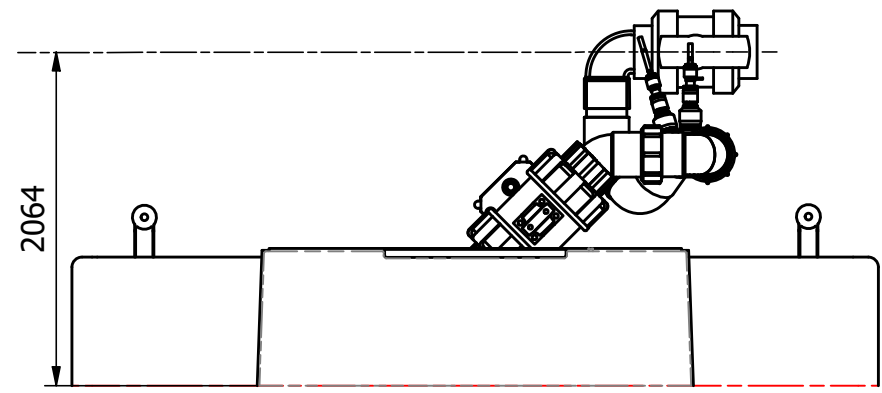
DIMENSIONS ACC. TO EN-ISO 406		Description:		Modified by	: KD
SHAPE- AND POSITION TOLERANCES ACC. TO EN-ISO 1101		H300 V2.1 230V STD		Modified date	: 04/02/2025
GENERAL TOLERANCES ACC. TO ISO 2768-mK		Scale:		Sheet:	
		1 : 10		1 / 2	
		Units:		Projection:	
		mm		⊕	
		A2		Mass:	
		N/A		Drawing NO	: HYD0845AC
				Project	: PDP-0218

**HYDRALOOP**

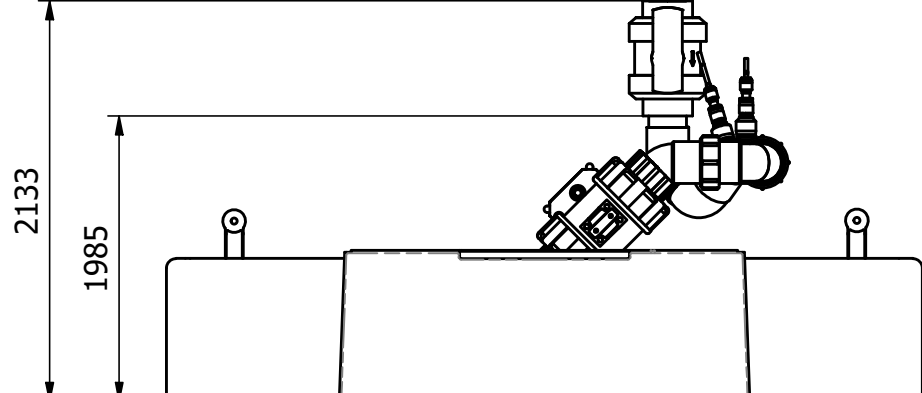
USE WATER TWICE

PVC ball valve - Position options

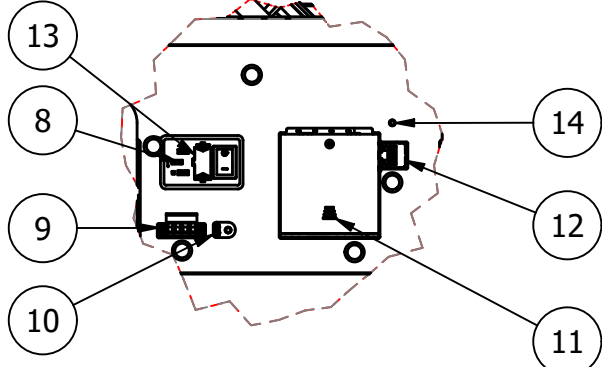
a.Horizontal option



b. Vertical option

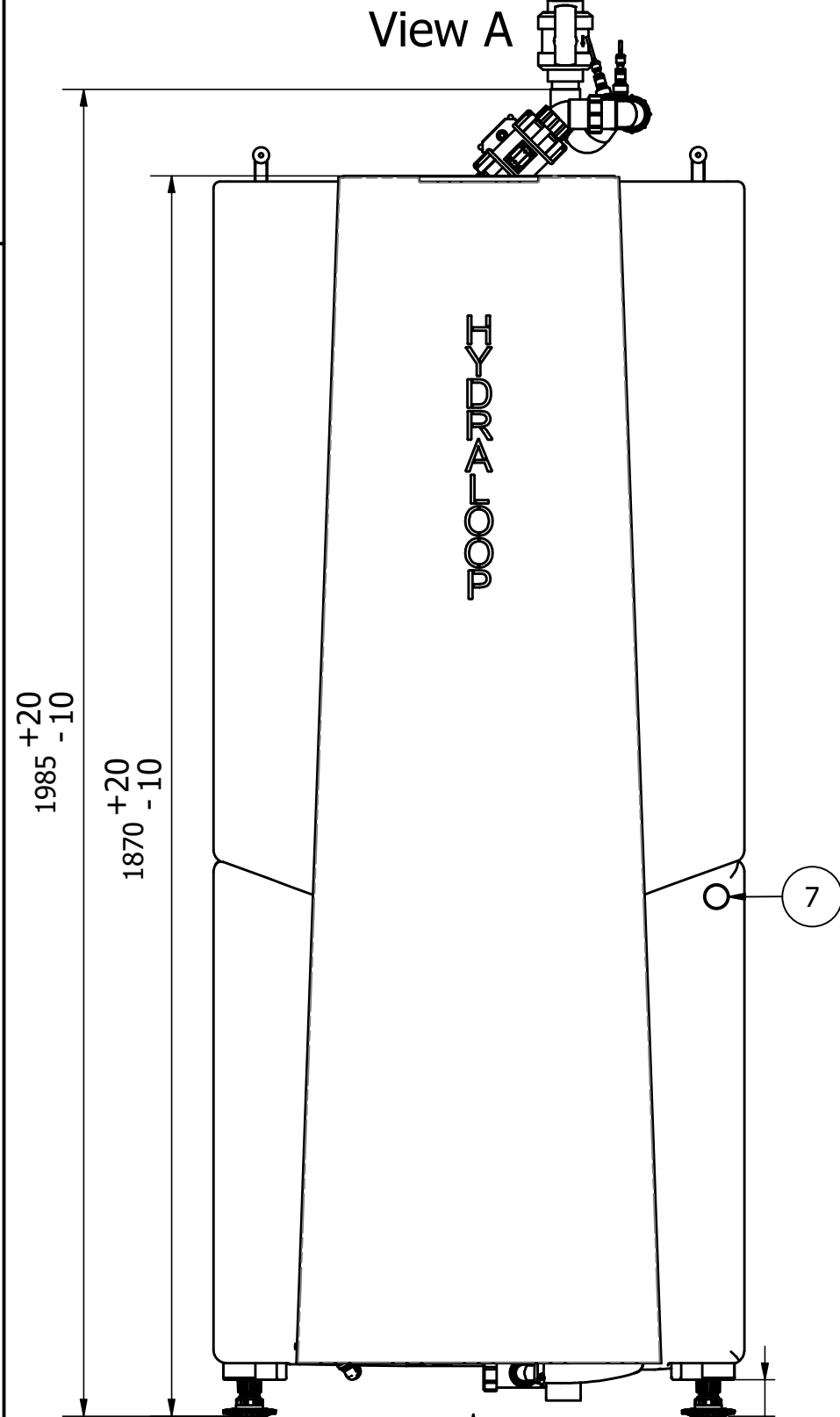


Detail C  
(Scale 1 : 5)

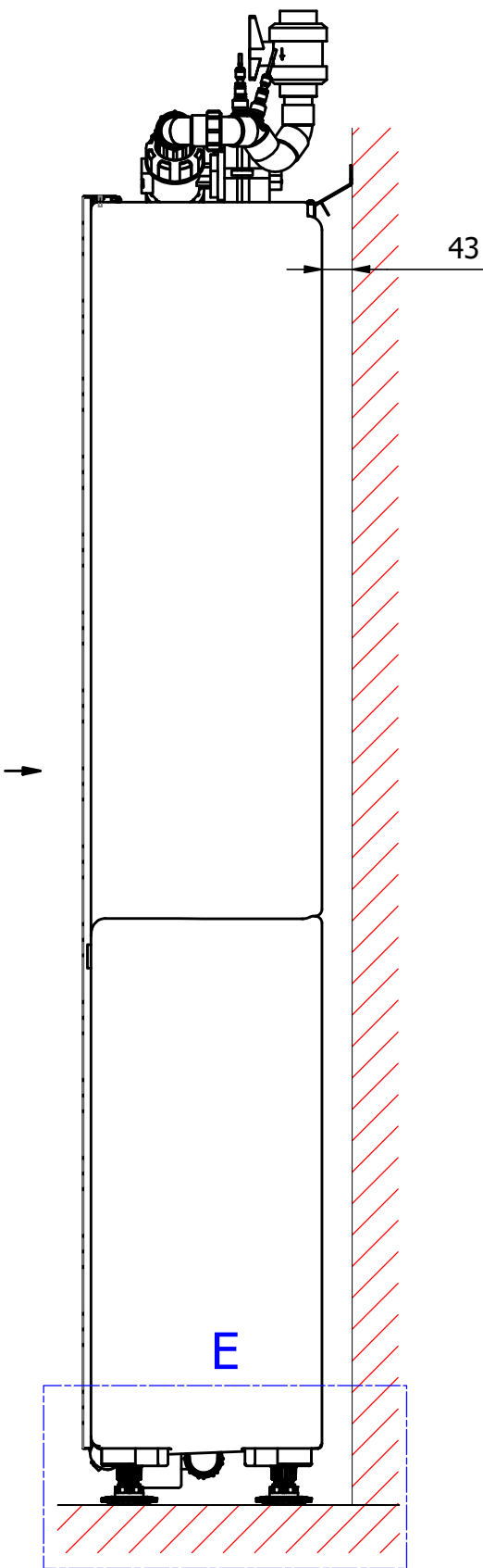
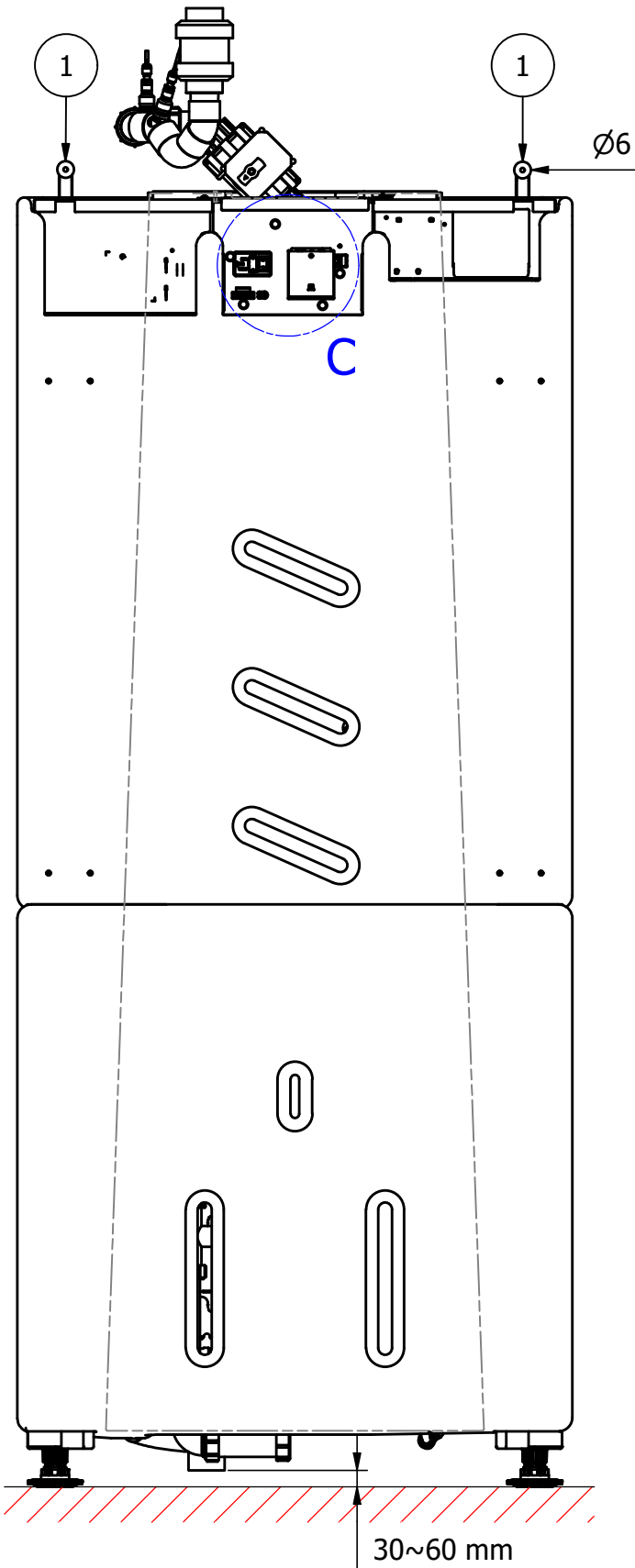


View A

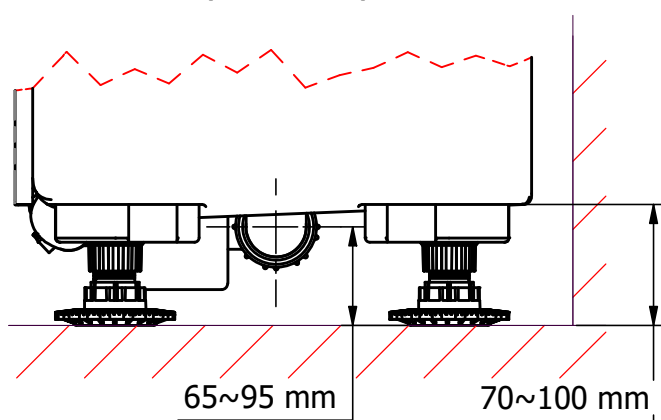
Ø40 mm ID - water inlet



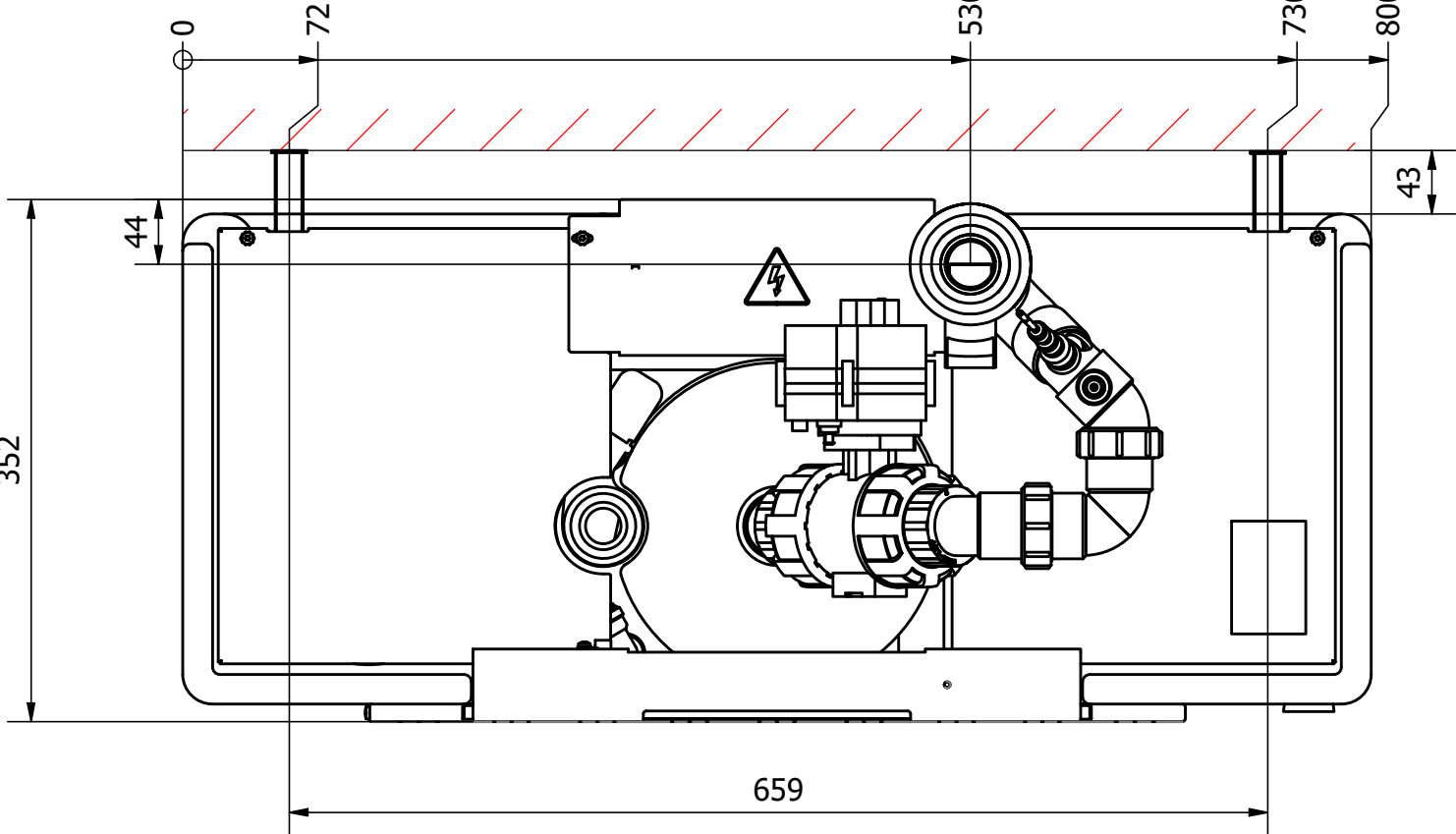
View B



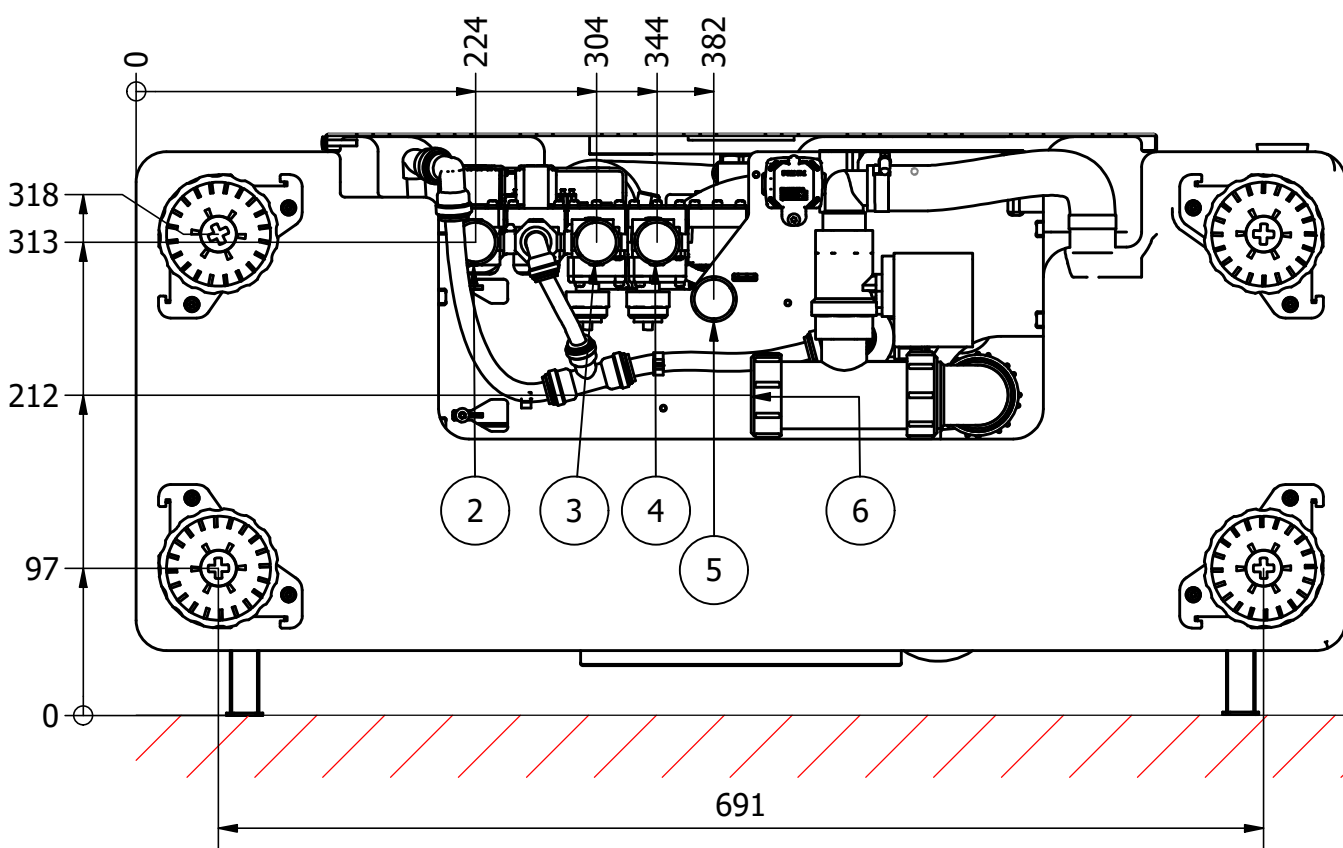
Detail E  
(Scale 1 : 5)



View A  
(1 : 5)



View B  
(1 : 5)



TABLE

POS	DESCRIPTION
1	Wall mount
2	Feed to Garden
3	Feed to toilet cistern (WC)
4	Feed to washing machine
5	Mains water supply
6	Waste water sleeve
7	Maintenance inlet for citric acid cleaning
8	Power supply
9	RS485
10	USB-C
11	Battery
12	LAN
13	Fuse
14	OPT button

DIMENSIONS ACC. TO EN-ISO 406		Description:		Modified by	: KD
SHAPE- AND POSITION TOLERANCES ACC. TO EN-ISO 1101		H300 V2.1 230V IDV		Modified date	: 04/02/2025
GENERAL TOLERANCES ACC. TO ISO 2768-mK				Material	:
		Scale:	Sheet:	Drawing NO : HYD0844AC	
		1 : 10	1 / 2	Project : PDP-0218	
		Units: mm	Projection:		
		A2	Mass: N/A		

**HYDRALoop**  
USE WATER TWICE



## Visual status indications

**White light:** A white light indicates that there is a sufficient volume of reusable water for all uses.

**Blue light:** A blue light indicates that there is currently no reusable water available and backup water is being used for all purposes.

**Blue white alternate light:** A blue-white alternating light indicates that there is reusable water in the storage tank, but not enough for a full washing machine cycle.

**Green light:** A green light indicates that the Hydraloop device is in automatic cleaning mode.

**Purple light:** A purple light indicates that the Hydraloop device is detecting that the washing machine is in operation.

**Orange light:** An orange light indicates that your Hydraloop device is currently not treating greywater and has automatically switched over to backup water.

Since your device is monitored 24/7, your Hydraloop installer knows about this. If the status light does not change after 24 hours, please contact Hydraloop support in your Hydraloop app.

**Red light:** A red light on the LED panel can indicate two things.

1. The Hydraloop device detects an issue with your toilets or washing machine.
2. There is an issue with the Hydraloop device, and no water can be distributed to the toilets and washing machines. In the event of a red light, please open your Hydraloop app and contact Hydraloop directly.

## Audible status indications

**High water level:** Buzzer alarm: 2 beeps every minute, visual alarm: 2 pulses every minute

**Air pump:** Buzzer alarm: 3 beeps every minute, visual alarm: 3 pulses every minute

**UV lamp:** Buzzer alarm: 4 beeps every minute, visual alarm: 4 pulses every minute

### Water storage tank re-disinfection

**circulation:** Buzzer alarm 5 beeps every minute, visual alarm: 5 pulses every minute

**Water distribution pump:** Buzzer alarm: 6 beeps every minute, visual alarm: 6 pulses every minute

If you need assistance, please call your Hydraloop installer or contact Hydraloop directly via [support@hydraloop.com](mailto:support@hydraloop.com) or the Hydraloop app.